



# NEWSLETTER #28

Sponsored by  
**tpp**

SEPTEMBER 2023

## IN THIS ISSUE:

1. CELEBRATING CHA NATIONAL AWARDS
2. EVENTS - EVIDENCE-BASED PRACTICE CONFERENCE
  - Q CHA SPECIAL INTEREST GROUP FRAILITY IN COMMUNITY HOSPITALS
3. RECENT EVENTS - DECARBONISATION OF RYE HOSPITAL
  - CHA Q COMMUNITY HOSPITAL SPECIAL INTEREST GROUP DISCUSSION INNOVATION AND RESEARCH
4. ARTICLES - DELAYED DISCHARGES - DR KIRSTY PROTHEROUGH
5. COMMUNITY HOSPITALS IN THE NEWS
6. CHA SUPPORT FOR COMMUNITY HOSPITALS
7. BLOG
8. VIDEOS OF COMMUNITY HOSPITALS
9. BARBARA MOORE RIP
10. RESOURCES TO HELP SUPPORT NETWORKS
11. JOIN OUR NETWORKS

## Celebrating CHA National Awards



We were delighted to give 3 awards to [Sussex Community Foundation Trust](#). Congratulations to the staff for their [Innovations and best practice](#) submissions.

Fabulous to share the good practice.



**Sussex Community NHS Foundation Trust**

- [1. INTRODUCTION OF A HEALTH CARE SUPPORT WORKER EDUCATION AND DEVELOPMENT TEAM](#)
- [2. INTERMEDIATE CARE UNIT END PJ PARALYSIS CAMPAIGN](#)
- [3. EPMA ROLL OUT AND CAREFLOW MEDICINES MANAGEMENT INTEGRATION, ELECTRONIC PRESCRIBING AND MEDICINES ADMINISTRATION PROJECT TEAM](#)



## Events—Evidence-Based Practice Conference



Herefordshire and Worcestershire Health and Care NHS Trust are hosting a **FREE EVIDENCE BASED PRACTISE ONLINE CONFERENCE FROM 16<sup>TH</sup> TO 20<sup>TH</sup> OCTOBER.**

Daily sessions are available between 10.30am and 1.30pm. The conference is being supported by a wide range of fantastic speakers nationally and is open to everyone.

For further details and how to book, please follow this Eventbrite link [EBP Conference: Leaders in their field & inspirational research careers](#)



## Events—Q CHA Special Interest Group Frailty in Community Hospitals

We look forward to hearing CHA Chair and Director [Dr Kirsty Protherough](#) present at the next CHA Special Interest Group online discussion -

**WEDNESDAY 4<sup>TH</sup> OCTOBER AT 7PM**

**UTILISING THE DIAGNOSIS OF "FRAILTY" FOR PERSONALISED CARE IN COMMUNITY HOSPITALS.**

**REGISTER HERE FOR FRAILTY IN COMMUNITY HOSPITALS**



COMMUNITY HOSPITAL SPECIAL INTEREST GROUP IN Q  
Online Discussion 4th OCTOBER at 7pm



**UTILISING THE DIAGNOSIS OF "FRAILTY" FOR PERSONALISED CARE IN COMMUNITY HOSPITALS**

**DR KIRSTY PROTHEROUGH, GP**

Chair and Director of the Community Hospitals Association  
Senior Lecturer at the University of Worcester



'The national voice for Community Hospitals'

The session aims to inspire and equip attendees with fresh perspectives on leveraging frailty to enhance our provision of personalised care. Don't miss out on this opportunity to gain valuable insights, network and discuss the opportunities and challenges presented when caring for pts living with frailty. Find out more on our [LinkedIn event page](#).

### INPUT NEEDED FOR SPECIAL INTEREST GROUP SESSION ON FRAILTY DIAGNOSIS IN COMMUNITY HOSPITALS



A message from Dr. Protherough

*Dear Community Hospitals Association network and members,*

*To ensure the session is as informative and valuable as possible, we kindly request your participation in a brief survey.*

*Your input will play a vital role in providing valuable insights and advancing our understanding of the effective use of frailty assessment tools within community hospitals.*

*Your responses will remain confidential and anonymous. The aggregated results will be showcased during the Frailty in Community Hospitals SIG session on 4th October, and a comprehensive report will be made available to you upon request.*

*Please take a few moments to complete the survey by clicking on the following link: ["Frailty" survey](#)*

*Your valuable input will contribute to the success of our upcoming session, and we look forward to your participation and hope it will provide you with thoughts and ideas to relate back to your own practice.*

*Thank you for your commitment to enhancing care within our community hospitals.*

*If you have any further questions do not hesitate to contact the CHA .*

*Kindest regards,*

*Dr Kirsten Protherough*

*Chair of the Community Hospital Association*

*"Geri" GP, Senior Lecturer University of Worcester*

**FOR RECORDINGS AND INFORMATION ABOUT OUR PAST Q CHA SPECIAL INTEREST GROUP EVENTS, PLEASE VISIT OUR [DISCUSSION GROUPS](#) PAGE.**



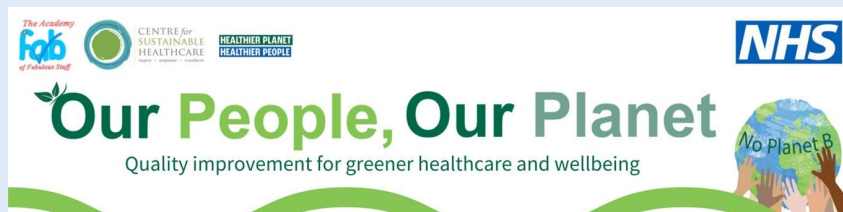
## Recent Events—Decarbonisation of Rye Hospital



Rye Hospital has become the first in the UK to be certified as Carbon Neutral. Its renewable energy system, powered by solar panels and wind power means the hospital has reduced its carbon footprint by 100 per cent.

At a recent online discussion event, Barry Nealon, Chair of Rye Charity and Jo Posnette, Trustee of Rye Charity spoke about their ambition to make [Rye Hospital carbon neutral](#).

They discussed the investment required and how this was achieved. A recording of the session will be available soon.



## Recent Events—CHA Q Community Hospital Special Interest Group Discussion Innovation and Research

*“Brilliant and inspiring session on research in community hospitals and how to get involved”* - an example of one of the tweets after the session.

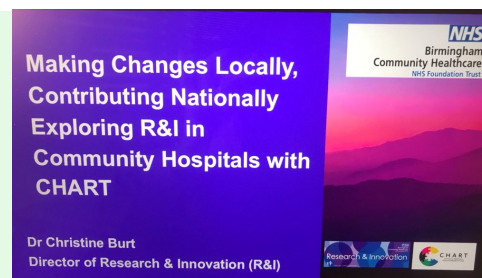


DR CHRISTINE BURT

Dr Christine Burt shared her experience and knowledge, and encouraged all those participating to get more involved in research.

She said “It has been shown that research-active organisations have improved outcomes for patients” - even in the areas of service not included in the research. The culture of the organisation is affected overall.

Christine shared some of the research going on in Community Trusts, and encouraged membership of CHART - Community Healthcare Alliance of Research Trusts. Christine's presentation and a recording will be available on the CHA website [here](#)



## Articles - Delayed Discharges - Dr Kirsty Protherough

Dr Kirsty Protherough was called upon to offer insights on the data issued by NHS England which showed delayed discharges in community hospitals in comparison to those in acute hospitals. Kirsty makes the case for a nuanced understanding and explains the role and contribution of community hospitals. Kirsty writes

*“Senior healthcare leaders must acknowledge that properly resourcing Community Hospitals to cater based on their unique needs, to their local populations, rather than closing beds, can alleviate pressure on the acute sector, shorten hospital stays, and enhance the overall experience of older adult patients, their families, and friends. It is imperative that we approach this issue with a nuanced understanding to ensure the continued effectiveness of our Community Hospitals.”*

Read the full article here [Delays in Discharge: A Complex Issue in Community Hospitals](#)



### Community Hospitals in the News



The community in St Ives have raised over £1m to reopen the [Edward Hain](#) Hospital as a Health and Wellbeing Centre.

Bishops Castle Hospital is in the news, as the community try and find a way to save their services. The ward in Fordingbridge Hospital has closed because of staffing issues, and is now under review.

The Friends of Insch Hospital and Community have taken the imaginative step to advertise for a new post of Community Co-ordinator, who would have a role in addressing gaps in health and social care within the Insch community.



In the news as well is the support given to Denbigh Hospital by the community for improvements. Funding through the Rye Hospital charity has enabled it to become the first community hospital to be Carbon Neutral.

You can read all about these community hospitals and more on our [news page here](#)



### CHA Support for Community Hospitals



TOM BROOKS

We are grateful to committee members that give their time and energy to supporting community hospitals. In particular, committee members are often called upon to work with local communities and/or Leagues of Friends to help them to have a voice in the planning of their local health care.

Thanks in particular to Tom Brooks for his sterling work in Wales, such as with the Tywyn Community Hospital. Do read his submission on behalf of the CHA to the Senedd in support of working closely with the community in Tywyn and consider re-opening the beds. Read [Tom's letter here](#).

Thank you so much to Chris Humphris, who travels many miles to support the communities for Bishops Castle Community Hospital and Insch Hospital. We hope that the resources, evidence, and suggestions given through the CHA are helpful in contributing to the strategies for local services including community hospitals.



“Going the Extra Mile for Insch” - Chris Humphris has been working with the local community in Insch on the future of their community hospital. [Read Chris' blog here](#).



### Videos of Community Hospitals

This is a selection of videos, showing the services provided in community hospitals. They provide a fascinating insight, and give a voice to staff, patients and communities. They can be found on our website under [Community Support](#) (please scroll) or follow the links below.



VICTORIA HOSPITAL WIMBORNE



ABINGDON COMMUNITY HOSPITAL



ALTON COMMUNITY HOSPITAL



WEST BERKS COMMUNITY HOSPITAL



RYE HOSPITAL (5 VIDEOS)



WITNEY HOSPITAL – WALKING ON SUNSHINE

### Barbara Moore RIP



We are sorry to announce the death of Barbara Moore.

Our condolences to her family, friends and colleagues.

Barbara spent 35 years working for the CHA in roles including CEO.

Barbara achieved a great deal for the organisation. Barbara was well respected, and was appreciated for the support she gave staff and managers. The conferences she organised were legendary. She will be greatly missed.

To [read tributes by CHA colleagues](#), please follow the link.



### Resources to help support Networks



*Hilda Campbell MBE has written a piece for this newsletter, offering resources for networks. Hilda is CEO for [Cope Scotland](#), and is a member of the Q Community.*

We read the great piece in the last Community Hospital Association (CHA) Newsletter around Networking in Action and the ideas coming forward about growing, supporting, and sustaining networks within Q and CHA. We thought the new suite of materials to support networks and network leaders may be of interest. They can be [downloaded here](#) If you would prefer to be sent a PDF please email [hilda@cope-scotland.org](mailto:hilda@cope-scotland.org)

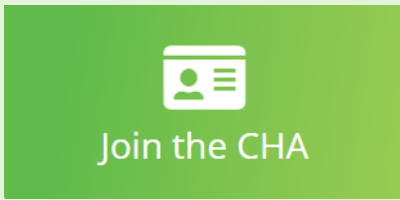
If you are interested in joining the “Nurturing and Weaving Networks SIG” within the [Q Community](#), we would love to connect with you. We are currently working on a self-assessment questionnaire, to help people focus on where they may want to begin to explore the materials, this also offers an opportunity to reflect on where improvements have been made using the materials.



We are grateful to the [Supporting Q Connections Funding](#) which helped us develop this work also to the work of [June Holley](#) which this suite of resources builds upon, along with so many others. We are also grateful to all the colleagues who worked with us on the content and design. Please feel free to directly email Hilda for more information. We all have it in us to be Network Weavers.

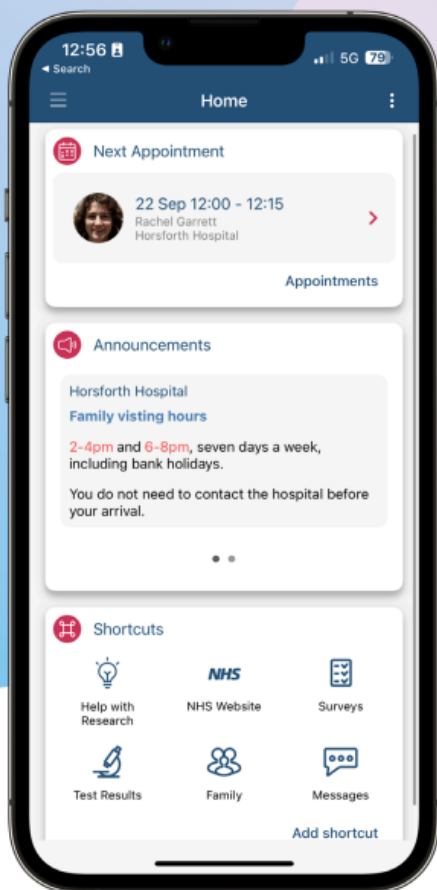
## Join our Networks

If you are not already a member, you are very welcome to join us.



- ◆ CHA personal [individual lifetime member](#) (free).
- ◆ We also offer [membership to organisations](#) such as NHS Trusts and Leagues of Community Hospital Friends.  
There is a small fee for this.
- ◆ You are welcome to join our [Community Hospital Special Interest Group](#) within the Q Community with a focus on Quality Improvement and sharing good practice.

For any enquiries and further information, please contact Eleanor Murphy [eleanor@communityhospitals.net](mailto:eleanor@communityhospitals.net)



## Available now at all Community Hospitals using SystemOne at no extra cost

Allows your patients to better manage their healthcare

- Uses NHS login, so no need for extra usernames and passwords
- Share appropriate clinical data with your patients
- Proxy access allows relatives to view appropriate medical record updates
- Secure messaging between your community hospital teams and the patient
- Send out surveys from SystemOne directly to your patients
- Integrated video consultations with SystemOne



Airmid is free to use for all SystemOne Community Hospitals, visit <https://tpp-uk.com/products/airmid/enabling-airmid/> to learn more and get started.

[www.tpp-uk.com](http://www.tpp-uk.com)  
[@TPP\\_SystemOne](https://twitter.com/TPP_SystemOne)

### Contact us:

[@ infocommunityhospitals@gmail.com](mailto:infocommunityhospitals@gmail.com)

[www.communityhospitals.org.uk](http://www.communityhospitals.org.uk)



[Community Hospitals Association](#)



[@CommHospUK](#)



[Community Hospitals Association](#)